



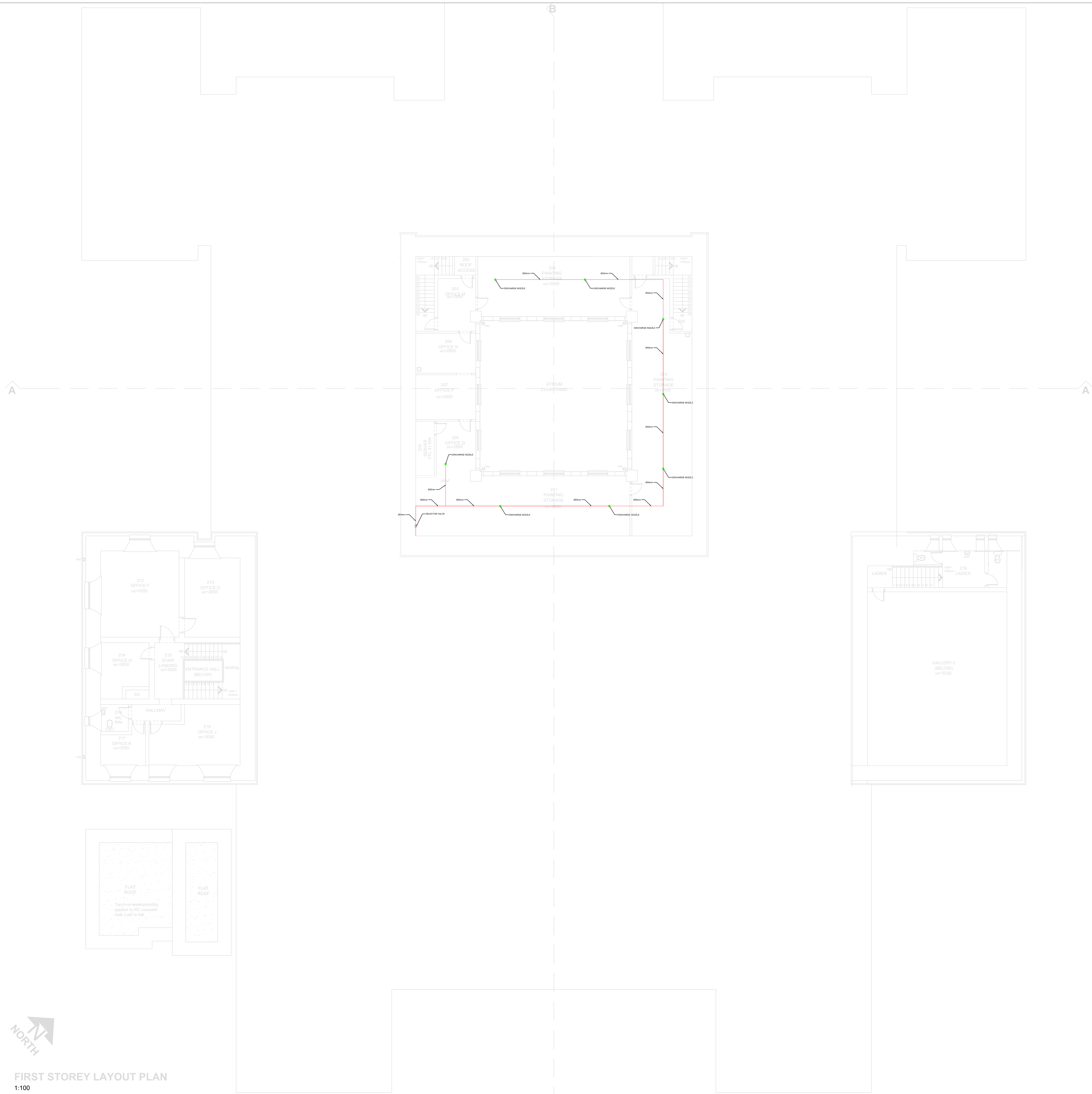


**LEGEND**

-  DISCHARGE NOZZLE
-  STEEL PIPE EN10220
-  SELECTOR VALVE
-  80L 300Bar CYLINDER



**FIRST STOREY LAYOUT PLAN**  
1:100



REVISION / WYSIGING			
NO. NR.	DATE DATUM	DETAILS DETAIL	
-	16-09-2020	ISSUED FOR INFORMATION	
A	13-09-2021	ISSUED FOR TENDER	

**COPYRIGHT**  
ALL RIGHTS RESERVED

NO PART OF THIS DOCUMENT MAY BE REPRODUCED OR TRANSMITTED IN ANY FORM OR BY ANY MEANS, ELECTRONIC OR MECHANICAL, INCLUDING PHOTOCOPYING, RECORDING OR BY ANY INFORMATION STORAGE OR RETRIEVAL SYSTEM, WITHOUT PERMISSION IN WRITING FROM THE AUTHOR.

THIS DRAWING IS TO BE USED FOR THE ENGINEERING SERVICE DEPICTED ONLY. NIE DIE TEKENING MOET ALLEEN A.K. GEBRUIK WORDEN VIR DIE INGENIEURSDIENSTE SOOS AANGEDUI.

**FIRE SUPPRESSION**

MAIN CONTRACTOR/HOOFKONTRAKTEUR

-

DRAWN GETEKEN RL	DESIGNED ONTWERP RL	CHECKED NAGEKEN RL	APPROVED GOEDGEKUR -
SCALE SKAAL 1:100	DATE DATUM 16-09-2020	CAD REF. NO./ CAD-REF. NR. 6432/G	BWG-SIZE TEKENINGROOTTE A0
DRAWING NO./TEKENING NR. 6432/G/03		REVISION HERBIENING A	

PROJECT/PROEJ IZIKO SOUTH AFRICAN NATIONAL GALLERY & ANNEXE FIRE SUPPRESSION INSTALLATION
DRAWING TITLE/TEKENING TITEL FIRE SUPPRESSION INSTALLATION 1ST STOREY



**Office 203, Edward III Building**  
70 Edward Road, Bellville, 7530  
Tel: +27 21 911 5284  
Fax: +27 21 413 0428  
cmb@cmbct.co.za  
www.clinkscapes.co.za

**CLINKSCALES MAUGHAN - BROWN**  
CONSULTING MECHANICAL & ELECTRICAL ENGINEERS  
PORT ELIZABETH EAST LONDON CAPE TOWN GEORGE  
CLINKSCALES MAUGHAN-BROWN (PTY) LTD (2003/010026/07)