





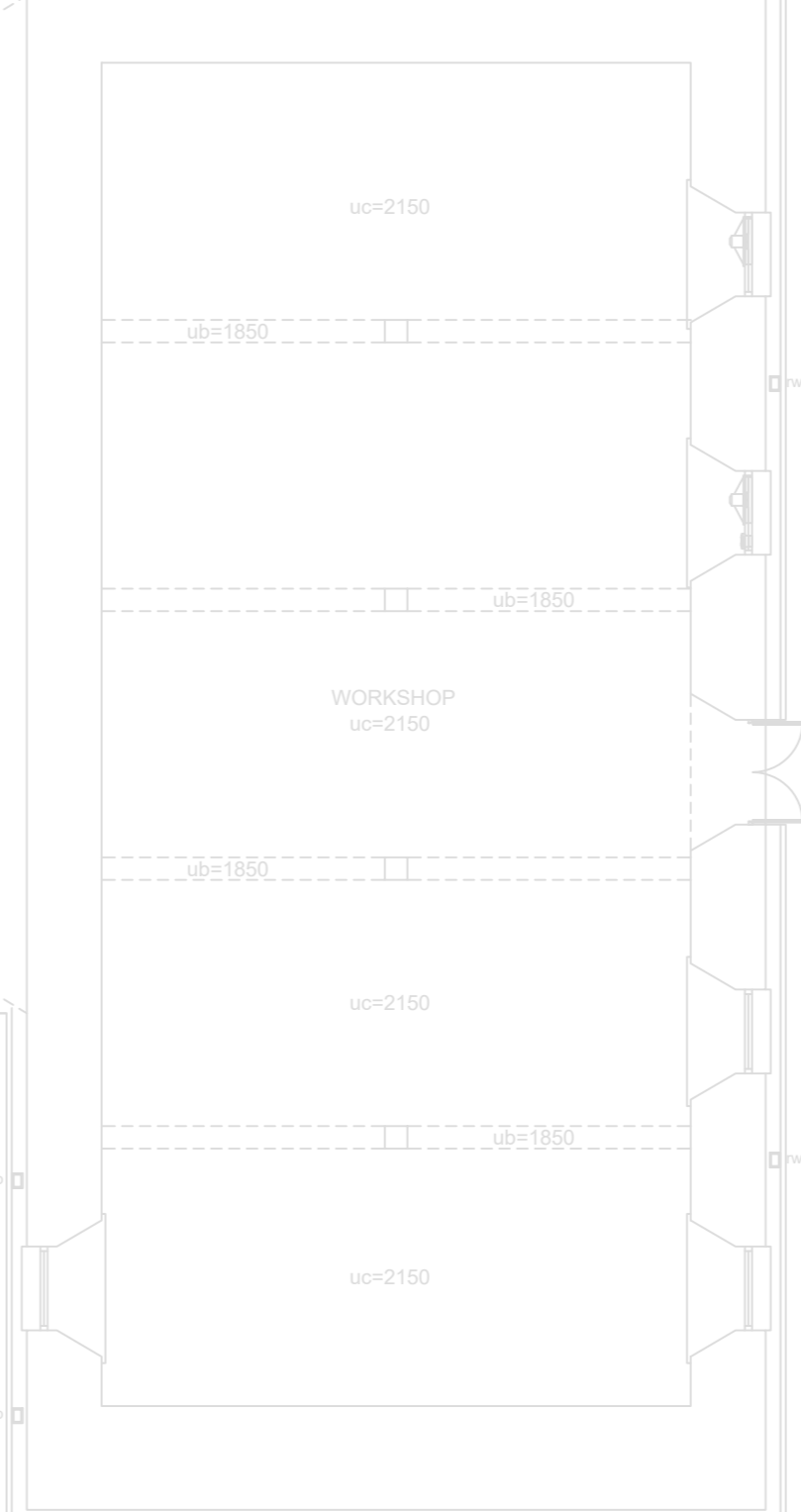
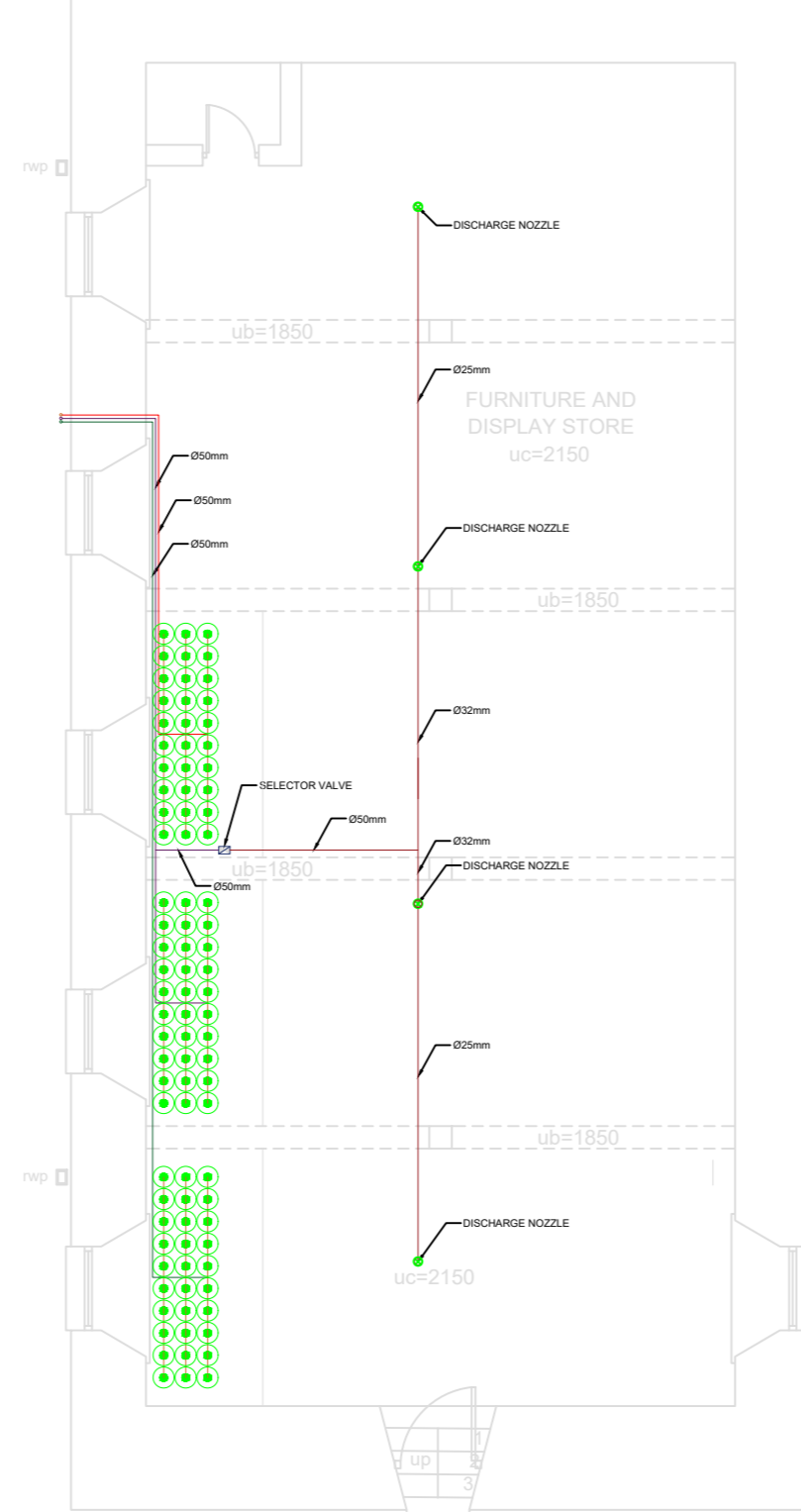
LEGEND

-  DISCHARGE NOZZLE
-  STEEL PIPE EN10220
-  SELECTOR VALVE
-  80L 300Bar CYLINDER

A ————— A



BASEMENT STOREY LAYOUT PLAN



REVISION / WYSIGING			
NO. NR.	DATE DATUM	DETAILS DETAIL	
-	16-09-2020	ISSUED FOR INFORMATION	
A	13-09-2021	ISSUED FOR TENDER	

COPYRIGHT
ALL RIGHTS RESERVED

NO PART OF THIS DOCUMENT MAY BE REPRODUCED OR TRANSMITTED IN ANY FORM OR BY ANY MEANS, ELECTRONIC OR MECHANICAL, INCLUDING PHOTOCOPYING, RECORDING OR BY ANY INFORMATION STORAGE OR RETRIEVAL SYSTEM, WITHOUT PERMISSION IN WRITING FROM THE AUTHOR.

THIS DRAWING IS TO BE USED FOR THE ENGINEERING SERVICE DEPICTED ONLY. HIERDIE TEKENING MOET ALLEENLIK GEBRUIK WORD VIR DIE INGENIEURSDIENSTE SOOS AANGEDUI.

FIRE SUPPRESSION

MAIN CONTRACTOR/HOOFKONTRAKTEUR
-

DESIGNED
RL

CHECKED
RL

APPROVED
RL

SCALE
1:100

DATE
16-09-2020

DRAWING NO./TEKENING NR.
6432/G/01

PROJECT/PROJEK
IZIKO SOUTH AFRICAN NATIONAL GALLERY & ANNEXE FIRE SUPPRESSION INSTALLATION

DRAWING TITLE/TEKENING TITEL
FIRE SUPPRESSION INSTALLATION SA NATIONAL GALLERY - BASEMENT STOREY

DESIGNED
RL

CHECKED
RL

APPROVED
RL

SCALE
1:100

DATE
16-09-2020

DRAWING NO./TEKENING NR.
6432/G/01



CLINKSCALES MAUGHAN - BROWN
CONSULTING MECHANICAL & ELECTRICAL ENGINEERS

Office 203, Edward III Building
70 Edward Road, Bellville, 7530
Tel: +27 21 911 5594
Fax: +27 21 413 0428
cmb@clinksc.co.za
www.clinksc.co.za

PORT ELIZABETH EAST LONDON CAPE TOWN GEORGE